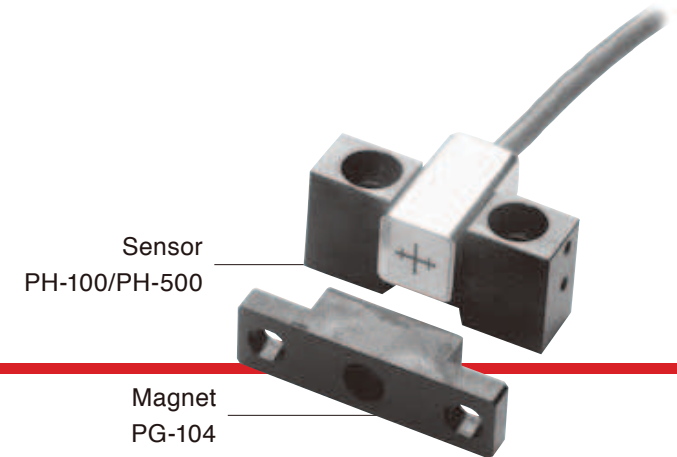


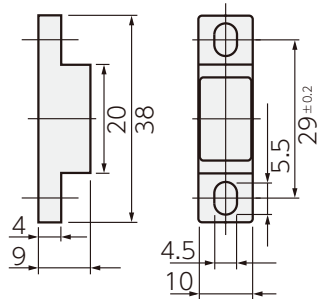
PH PH-100/-500

High-precision, non-contact Magneswitch

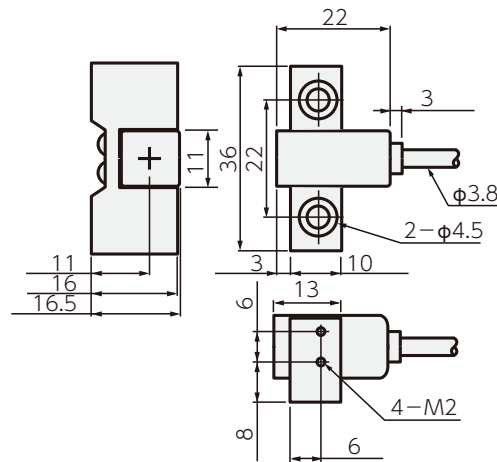


Outer dimensions

PG-104



PH-100/500



Unit: mm

- A combination of sensor PH-100/PH-500 and magnet PG-104 that are connected to our counter unit or detector can be used as a reference point for Magnescale or rotary encoder.
- Withstands extreme work conditions
- High precision: $\pm 1 \mu\text{m}$

Specifications

Model	PH-100	PH-500
Repeatability	$\pm 1 \mu\text{m}$ (under same conditions)	
Magnet	PG-104	
Clearance	Max. 3 mm	
Operating range	-10 °C to 50 °C	
Detection direction	Unidirectional	Both directions
Cable length	3 m	20 m